

ECOCORR SEWERAGE PIPES

Polyethylene pipe for non-pressure waste
and stormwater application.

PIPELIFE 
always part of your life

ECOCORR

ECOCORR are extruded polyethylene pipes that combine bright inner layer (allowing effortless inspection of the system) and outer corrugated layer, with a specific rib structure. This specific structure guarantees high ring elasticity and resistance to dynamic and static loads.

Pipes are manufactured with effective length of 6m and a socket that is a inseparable part of the pipe. The connection between the pipes and the fittings is achieved by a coupler and EPDM seal, that guarantees watertightness.

TECHNICAL CHARACTERISTICS

Material:

PEHD High Density Polyethylene

Color:

Inside layer - blue / outside layer - black

Effective length:

6 m

Outer diameter:

DN/OD 160 ÷ DN/ID 1000

Stiffness class:

SN4; SN8 / 400 kg/m²; 800 kg/m²

Standard:

400 kg/m² - BDS EN13476-3

800 kg/m² - BDS EN13476-3

APPLICATION

- A gravity take away of household, production, rain, mixed and drainage wastewater
- Building and yard sewerage networks
- Electricity supply and telecommunication
- As protective pipe system

ADVANTAGES

- Easy to carry and transport
- Fast and easy installation
- Easy cutting and design
- Mould cast elastomer sealing rings EPDM 45÷5. BDS EN 681-1
- Guaranteed resistance of the system in weak and loess soil
- Low weight
- Long service life
- Supplied with the full set of fixing elements (fittings, manholes and equipment)
- Clear internal surface for easy inspection
- Guaranteed stability of the system in weak and loamy soils
- The pipes and fittings come with an integrated ribbed socket and elastomer sealing ring
- The manufacturer of all system elements is subject to continuous quality control from the raw material to the finished product
- Can be integral as part of an entire sewer system made of pipes, fittings, manholes and equipment
- Compatible with smooth-wall PVC pipes of the KG type by means of the unique connection system made of pipe sleeves and adapters



PRODUCT RANGE

Nominal Diameter DN	Outer pipe diameter D _{out}	Inner pipe diameter D _{in}	Rib height H	Rib length L	Effective pipe length (excluding the socket)	Socket length	Inside socket diameter D _{in,socket}
[mm]	[mm]	[mm]	[mm]	[mm]	[m]	[mm]	[mm]
DN/OD 160	160,00	139,00	10,50	18,33	6	94,00	160,50
DN/OD 200	200,00	176,00	12,00	20,63	6	113,00	201,90
DN/OD 250	250,00	221,30	14,35	20,63	6	129,00	252,40
DN/OD 315	315,00	277,40	18,80	27,50	6	147,00	318,00
DN/ID 300	342,95	300,00	21,48	33,00	6	102,00	345,95
DN/OD 400	400,00	350,00	25,00	33,00	6	158,00	403,70
DN/ID 400	457,45	400,00	28,73	43,50	6	122,00	461,15
DN/ID 500	561,50	499,00	31,25	60,95	6	260,00	565,00
DN/ID 600	660,00	588,00	36,00	60,95	6	295,7	665,00
DN/ID 800	926,10	806,50	59,80	81,26	6	339,30	932,00
DN/ID 1000	1133,50	1000,00	66,75	121,89	6	403,00	1150,00

DRAINAGE PIPES ECOCORR

The drainage corrugated pipes ECOCORR can be offered with a perforation MP (120°), LP (220°) and TP (360°), with a standard range kept in stock is perforated at 220° for diameters DN/OD 160 and DN/OD 200. Drainage pipes with a larger diameter and different perforation angle are offer by a individual offer. The perforation of the drainage pipes is with a rectangular shape (slots). While installing drainage pipe, geotextile is used 200 g/m. By doing so the system is protected from sand, gravel, etc, to fall in to the system.

Drainage pipes are offered with ring stiffness SN4 и SN8.

TECHNICAL CHARACTERISTICS

Material: PEHD High Density Polyethylene

Color: Inside layer - blue / outside layer - black

Effective length: 6 m

Outer diameter (DN/OD): 160, 200, 250, 315, 400

Inside diameter: 315,400,500,600,800,1000

Stiffnes class: SN4, SN8

Area of perforation: 50 cm²/m'

Standard: DIN 4262-1

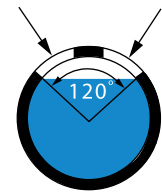
Type: R2-with corrugated outer surface and smooth inside surface

APPLICATION

- Drainage of buildings
- Highways
- Streets
- Airports
- Parkings

PERMEABILITY: MP 120°

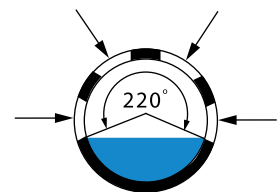
Drainage pipe type:	Degrees of perforation:	Number of slots per meter:	Area of slots per meter:	Inflow Q _{dr}
[-]	[°]	[psc]	[cm ²]	[l/s]
EcoCORR_DR_DW_OD160	120	137.5	4.95	9.46
EcoCORR_DR_DW_OD200	120	120	50.4	9.63
EcoCORR_DR_DW_OD250	120	120	50.4	9.63
EcoCORR_DR_DW_OD315	120	90	45	8.60
EcoCORR_DR_DW_ID300	120	90	56.25	10.75
EcoCORR_DR_DW_OD400	120	75	56.25	10.75
EcoCORR_DR_DW_ID400	120	90	67.5	12.90
EcoCORR_DR_DW_ID500	120	45	67.5	12.90
EcoCORR_DR_DW_ID600	120	35	70	13.38
EcoCORR_DR_DW_ID800	120	30	60	10.41
EcoCORR_DR_DW_ID1000	120	24	60	11.47



MP

PERMEABILITY: LP 220°

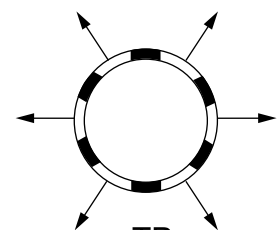
Drainage pipe type:	Degrees of perforation:	Number of slots per meter:	Area of slots per meter:	Inflow Q _{dr}
[-]	[°]	[psc]	[cm ²]	[l/s]
EcoCORR_DR_DW_OD160	220	165	59.4	11.35
EcoCORR_DR_DW_OD200	220	144	60.48	11.56
EcoCORR_DR_DW_OD250	220	144	50.4	11.56
EcoCORR_DR_DW_OD315	220	108	54	10.32
EcoCORR_DR_DW_ID300	220	108	67.5	12.90
EcoCORR_DR_DW_OD400	220	90	67.5	12.90
EcoCORR_DR_DW_ID400	220	120	90	17.20
EcoCORR_DR_DW_ID500	220	72	108	20.64
EcoCORR_DR_DW_ID600	220	56	112	21.41
EcoCORR_DR_DW_ID800	220	60	120	22.94
EcoCORR_DR_DW_ID1000	220	40	120	22.94



LP

PERMEABILITY: TP 360°

Drainage pipe type:	Degrees of perforation:	Number of slots per meter:	Area of slots per meter:	Inflow Q _{dr}
[-]	[°]	[psc]	[cm ²]	[l/s]
EcoCORR_DR_DW_OD160	360	220	79.2	15.14
EcoCORR_DR_DW_OD200	360	192	80.64	15.41
EcoCORR_DR_DW_OD250	360	192	80.64	15.41
EcoCORR_DR_DW_OD315	360	144	72	13.76
EcoCORR_DR_DW_ID300	360	144	90	17.20
EcoCORR_DR_DW_OD400	360	120	90	17.20
EcoCORR_DR_DW_ID400	360	120	90	17.20
EcoCORR_DR_DW_ID500	360	72	108	20.64
EcoCORR_DR_DW_ID600	360	56	112	21.41
EcoCORR_DR_DW_ID800	360	60	120	22.94
EcoCORR_DR_DW_ID1000	360	40	120	22.94



TP

Calculations are based on minimum required inflow speed, which is calculated with height of the water layer of 1,3 m



The contents and information contained in this brochure are intended for general marketing purposes only and shall not be relied upon by any person as complete or accurate. In particular, this brochure cannot replace proper expert advice on the characteristics of the products, their usage, suitability for any intended purpose, or the proper processing method. All contributions and illustrations in this brochure are subject to copyright. Unless explicitly otherwise stated, the repetition of content is not permitted. The use of photocopies from this brochure is for private and non-commercial use only. Any duplication or distribution for professional purposes is strictly forbidden. Non-Liability: PIPELIFE has established this brochure to the best of its knowledge. Pipelife cannot accept any liability suffered or incurred by any person resulting from or in connection with any reliance on the content of or the information contained in this brochure. This limitation applies to all loss or damage of any kind, including but not limited to direct or indirect damages, consequential or punitive damages, frustrated expenses, lost profit or loss of business.