



PRO-WM POLYPROPYLENE WATER METER CHAMBERS

!!! This water meter chamber is approved by the inspection authorities that operate the national water supply piping network and found to meet all the requirements for inspection, operation and maintenance.

Pipelife's water meter chamber PRO-WM is a product containing a water meter unit in conformity with Regulation No 4 of 17 June 2005, Art.29 (par. 1, 2, 3, 4 & 5)

The water meter chambers have a two-layered polypropylene structure with an air gap between the two layers serving as heat insulation. The structure has the capacity to withstand up to 1000 kg/m² of earth pressure, which makes it extra resistant to deformation and applicable for all types of conditions. The structure includes the measurement and control assembly equipped with all the devices required by the effective legal regulations. The water meter unit is placed in the highest possible position to make reading easy. Heat insulation is provided under the lid to prevent freezing in winter.

COMMON FEATURES:

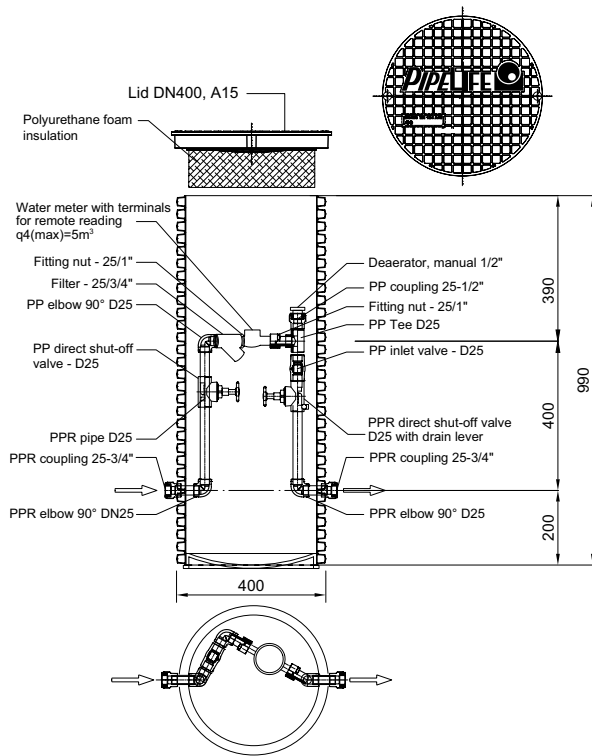
- direct valve without drain lever
- filter
- water meter fitting nut
- water meter /customer's choice, not included in the price/
- manual or automatic deaerator
- non-return valve
- direct valve with integrated drain lever
- heat insulated lid

VERSIONS:

- with or without floor; the use of a floor prevents the penetration of ground water
- with automatic or manual deaerator; the use of an automatic deaerator will do away with any manual operations to let the air out when filling the system
- optional customer-choice of a water meter

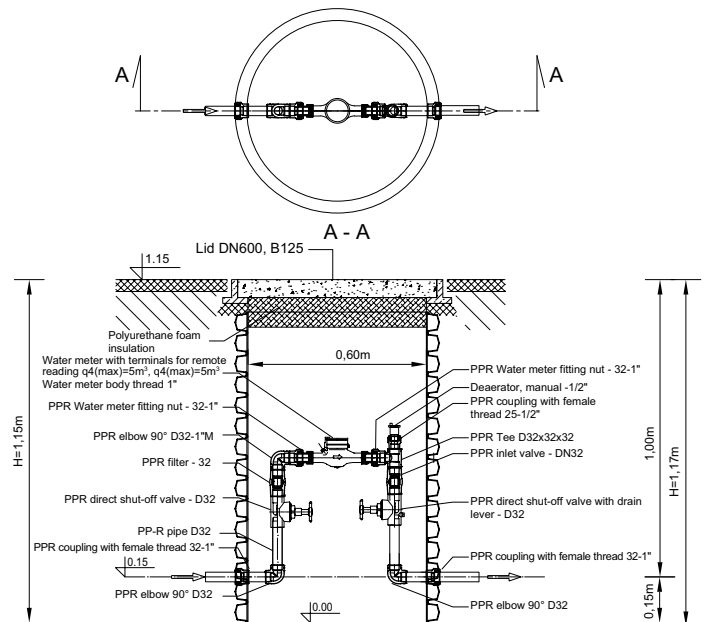
WATER METER CHAMBER PRO-WM-25/400

- the tank is Ø400
- intended for water supplying pipe Ø25
- the lid has DN400, load capacity class A15 (1.5 tons)
 - a) lockable
 - b) non-lockable



WATER METER CHAMBER PRO-WM-32/600

- the tank is Ø600
- intended for water supplying pipe Ø32
- option for fitting the water meter by 1" or 1¼" coupling
- suitable for use in buildings with higher water consumption
- the lid has DN600, load capacity class B125 (12.5 tons), non-lockable



!!! This water meter chamber is approved by the inspection authorities that operate the national water supply piping network and found to meet all the requirements for inspection, operation and maintenance.

- **Automatic deaerator**
 - Deaeration takes place without human intervention
 - Contributes for the easier and automatic evacuation of the air that usually builds up at the highest points of piping networks
 - Comfortable use of sink faucets without air leakage in case of water supply breaks due to power failures, etc.
- **Direct valve instead of ball shut-off valves**
 - Facilitates repair works because unlike ball valves glove valves can be disassembled and have their parts replaced
- **Floorless water meter chamber**
 - Suitable for use in terrains where the ground water level is high or in dry earth terrains
 - Saves investments, especially when a chamber with Ø600 or multiple chambers are used
- **Choice of a water meter**
 - Option for mounting a customer's own water meter
 - The chambers with Ø600 allow the opportunity to mount water meters with 1" or 1¼" coupling, which is suitable for buildings with high water consumption such as pools, irrigation, etc.
- **Lockable lid for water meter chambers Ø400**
 - Locking mechanism to prevent any unauthorized access to the water meter
 - Favors the customer and the local water supply and sewerage company